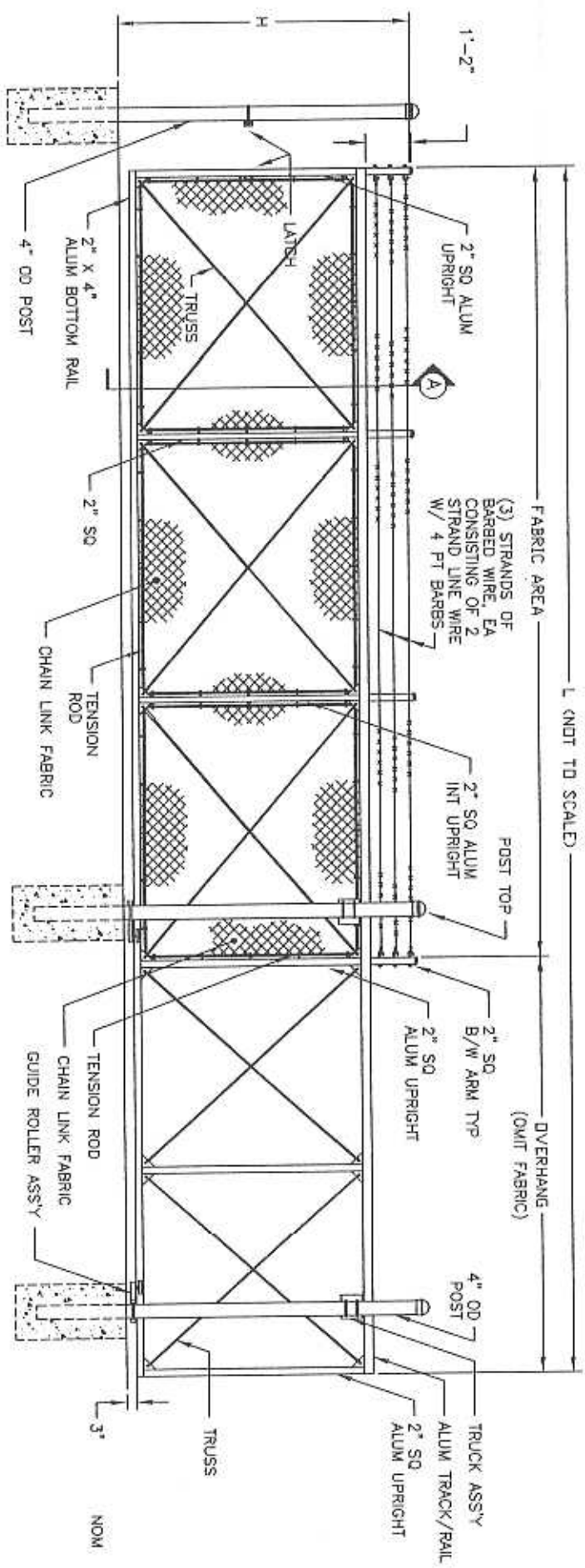


GATE PLAN



GATE ELEVATION

SEE SHEET #2 FOR SECTIONS & DETAILS

- NOTES:
1. FOOTING WIDTH TO BE (4)X POST WIDTH. MIN DEPTH TO BE .36".
 2. GATES MAY BE MANUALLY OR ELECTRICALLY OPERATED.

NOM HEIGHT (H)
7'-0" - (6'+1')
8'-0" - (7'+1')
9'-0" - (8'+1')
OPENING
6'-0" THROUGH 30'-0"

International Gate Devices
800-557-GATE (4283)

SINGLE CANTILEVERED SLIDING GATE
ROUND POSTS, W/ BARBED WIRE

DWG: ST#1
BY: _____
DATE: _____